

## Appendix C

### Performance Summary

LONDON BOROUGH OF BARNET - TOTAL COMBINED

Periods to end December  
2012

Benchmark - LOCAL AUTHORITY UNIVERSE

Pound Sterling

Category - TOTAL ASSETS

This page summarises the overall value and performance of the Fund.

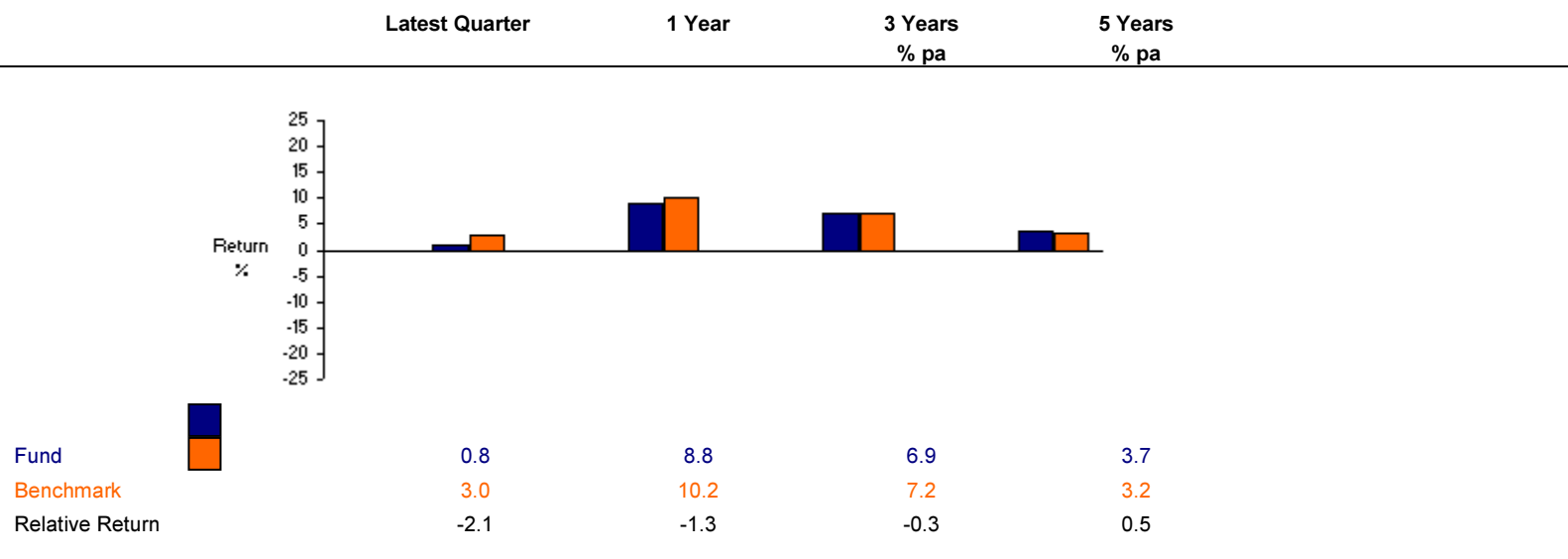
#### Fund Value

Values (GBP)'000	Mandate	Value at 28/09/2012	Transactions	Capital Gain / loss	Income	Value at 31/12/2012	% Fund
NEWTON	Structured	240,437	2,520	-4,866	0	238,092	31
SIM	Structured	224,872	28	4,288	426	229,188	30
NEWTON	Bd GBP Cpt	117,822	1,080	2,512	0	121,415	16
SIM	Bd GBP Cpt	109,710	10	2,762	70	112,482	15
L&G GLB EQ	Eq Gbl x UK	34,328	0	754	0	35,081	5
L & G	Bd GBP Cpt	16,541	0	390	0	16,931	2
CASH	Trans	5,264	-766	0	10	4,498	1
<b>Total Fund</b>		<b>748,974</b>	<b>2,873</b>	<b>5,840</b>	<b>507</b>	<b>757,687</b>	<b>100</b>

The table shows the value of each Portfolio at the start and end of the period.

The change in value over the period is a combination of the net money flows into or out of each Portfolio and any gain or loss on the capital value of the investments.

## Fund Returns



The graphs show the performance of the Fund and Benchmark over the latest period and longer term.

The relative return is the degree by which the Fund has out or underperformed the Benchmark over these periods

# = Data not available for the full period